

Bodas do Cordeiro

Arranjo:
Janne Gonçalves

♩ = 72

Musical notation for the bass line of 'The Sound of Silence'. The notation is in bass clef with a key signature of one flat (B-flat) and a common time signature (C). The melody consists of a series of notes and rests, including a half note, a quarter note, and a half note, followed by a series of eighth notes and a final half note.

8

[illegible]

15

[illegible]

22

28

[illegible]

35

pizz.

arco

35 *piano* *meno*

3

42

The bass line is written on a single staff in bass clef with a key signature of one flat (B-flat). It begins with a half note G2, followed by a half note F2, and then a half note E2. The next measure contains a half note D2, followed by a half note C2, and then a half note B1. The final measure of the first phrase is a half note A1. The second phrase begins with a half note G1, followed by a half note F1, and then a half note E1. The final measure of the second phrase is a half note D1. The piece concludes with a final measure containing a half note C1.

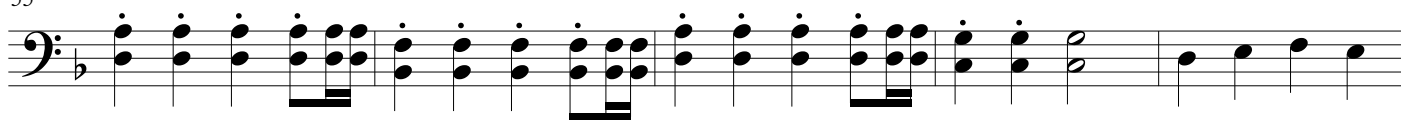
47

The bass line of 'The Rose Tree' is written in bass clef with a key signature of one flat (B-flat). The melody consists of eighth and sixteenth notes, with some triplets indicated by a '3' over the notes. The line is divided into measures by vertical bar lines.

50

The bass line of 'The Rose Tree' is written in G major (one flat) and 3/4 time. It begins with a single eighth note G2, followed by a quarter rest. The melody then enters with a dotted quarter note G2, followed by eighth notes A2 and B2. This is followed by a quarter rest, then a dotted quarter note C3, and eighth notes B2 and A2. The pattern continues with a quarter rest, a dotted quarter note G2, and eighth notes F2 and E2. The final measure consists of a dotted quarter note D2 and a half note C2.

55



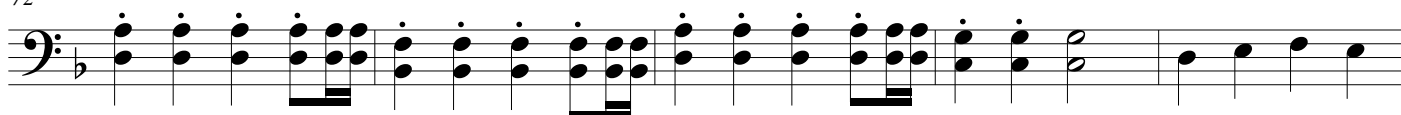
60



66



72



77



83



89



94

